

# DATA SECURITY IN COVID-19 TIMES

**SURVEY WITH  
4,664 EXECUTIVES  
OF ORGANIZATIONS  
GREATER THAN  
\$1 BILLION IN REVENUE  
FROM 24 INDUSTRIES  
IN 16 COUNTRIES ACROSS  
AMERICAS, EUROPE, AND  
ASIA PACIFIC.**

## SECURITY STRATEGIES ARE FALLING SHORT



**GAPS IN  
PROTECTION**

**IMPACT  
FROM  
BREACHES**

**CUSTOMER  
DATA  
EXPOSED**

**LOW  
DETECTION  
RATES**

## ORGANIZATION IMPACT



**54 %**

**OF BREACHES  
IDENTIFIED BY  
SECURITY TEAMS**

**44 %**

**ORGANIZATIONS  
HAD >500K  
RECORDS EXPOSED  
IN 2019**

**55 %**

**OF AN ENTITY  
IS ACTIVELY  
PROTECTED**

**97 %**

**OF BREACHES  
HAD A NEGATIVE  
IMPACT LASTING  
>24 HOURS**

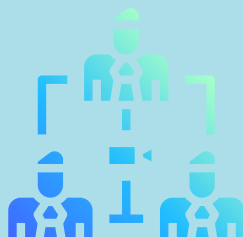
Source--2020 Accenture Security's Third Annual State of Cyber Resilience

## COVID-19 PRESENTS A PERFECT STORM FOR CYBER INFECTIONS AND INTRUSIONS DUE TO

**PLACEMENT OF  
WORKERS/EMPLOYEES  
REMOTELY OUTSIDE OF  
ENTERPRISE**



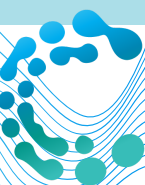
**LOWER STAFFING LEVELS  
AT ENTERPRISE SECURITY  
OPERATIONS CENTERS**



**HIGH INTEREST IN COVID-19  
NEWS AND EMAIL**



Source—April 7, 2020 Informa Tech's "Dark Reading" publication (leading cyber security professional online resource)





## GLOBAL MEDIAN DWELL TIME

(DEFINED AS THE DURATION BETWEEN THE START OF A CYBER INTRUSION AND ITS DETECTION)

# 56 DAYS

# 12%

OF CYBER INTRUSIONS  
HAVE DWELL TIME  
GREATER THAN 700 DAYS!

Source--2020 report by cyber solutions company Fire Eye, Inc.

## THE HOME/REMOTE OFFICE PRESENTS MULTIPLE VULNERABILITIES

→ UNSECURED DATA TRANSMISSIONS- NO VPN, BYPASSING OF CONTROLS TO "GET THINGS DONE", USE OF OPEN INTERNET-FACING CHANNELS.

→ CHANGES IN APP- ACCESS; BROADENING RIGHTS TO ENABLE OFF-SITE ACCESS; LIMITED MULTI-FACTOR AUTHENTICATION.

→ USE OF PERSONAL DEVICES AND TOOLS THAT ARE CONSUMER GRADE AND NOT CENTRALLY MANAGED, NOR ENABLED FOR NETWORK ACCESS ENDPOINT DATA PROTECTION.

→ SUCCESS OF PHISHING EMAILS AND FAKE CALL-CENTER CORRESPONDENCES.



Source—March 2020 McKinsey & Co. article on Cybersecurity During the Coronavirus Crisis

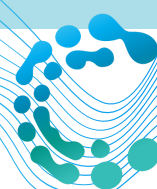
## Eradicate virtual enterprise risk with COVAX DATA

Covax actually protects the data

Immediate alerts of suspicious attempts to access data

AI driven forensics to uncover both external and internal bad actors

Ability to remotely disable access





IN APRIL 2020, THE AHA AND AMA, PUBLISHED A BEST PRACTICES GUIDE  
"WHAT PHYSICIANS NEED TO KNOW WHEN WORKING FROM HOME DURING THE  
COVID-19 PANDEMIC"  
AMONG OTHER THINGS, THEY RECOMMENDED  
**USING THE 3-2-1 RULE TO CREATE SECURE  
DATA BACKUPS**

**3**  
OFFLINE  
SEGMENTED  
BACKUP COPIES OF  
YOUR DATA

**2**  
DIFFERENT  
MEDIA TYPES

**1**  
CLOUD-BASED  
BACKUP



**COVAX DATA ELIMINATES THE NEED FOR  
THREE BACK-UP COPIES OF DATA DUE  
TO OUR ENHANCED DATA PROTECTION**



**COVAX FURTHER REDUCES THE BACK-UP  
ASSOCIATED COMPUTE AND STORAGE  
EXPENSES**



**DISCOVER OUR SOLUTIONS**



**DATA MOLECULES**



**CHAIN OF CUSTODY**



**ASSURED COMPLIANCE**



**NEXT-LEVEL SECURITY**

**VISIT OUR WEBSITE FOR MORE INFORMATION**

**CONTACT US**



1- 520 -416 -5893



info@covaxdata.com

**WWW.COVAXDATA.COM**

